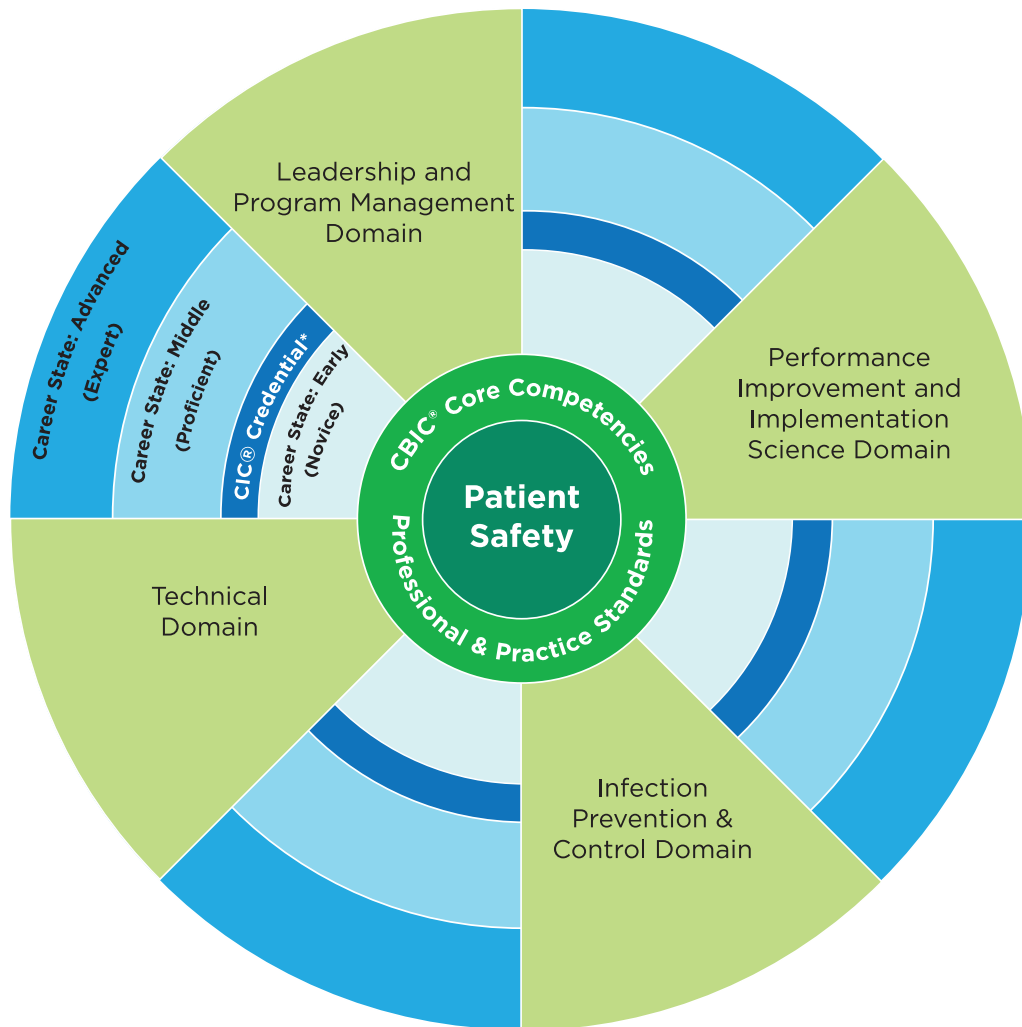


APIC Competency Model

Quick Reference Guide



The model has been developed to illustrate current and future practice along the infection preventionist's (IP) career path.

The core of the model is based on the principles and practices of safety science. Foundational elements also include the CBIC core competencies and professional and practice standards.

Baseline IP core competencies are defined by CBIC and are derived from their evidence-based practice analysis research.

The four green "spokes" of the diagram indicate priority areas of professional development for all IPs in the near future (3-5 years). These areas expand on the foundational components. While individual skills will vary, the intent is that ongoing professional development will lead to mastery across domains over time.

CIC® certification represents the bridging point between novice and proficient career levels and is the hallmark of competency across the career continuum.

The advanced (expert) will have achieved a high level of knowledge and skill in those domains most closely aligned with the IP's career goals.

Green areas indicate critical competencies required for the expanding IP role.

* The CIC® Credential is available from CBIC®
The Certification Board of Infection Control
and Epidemiology, Inc.