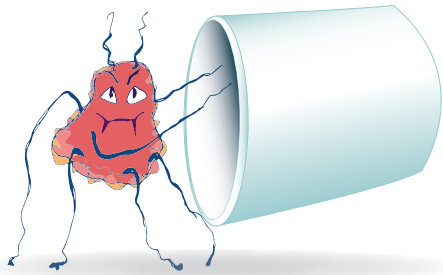
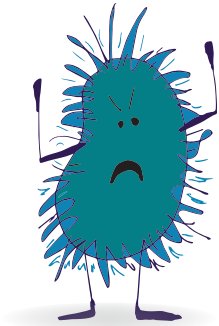


Infection Prevention *and You*

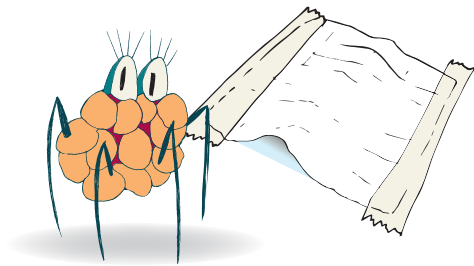
What are healthcare-associated infections?

Healthcare-associated infections are a result of germs entering your body during medical care.



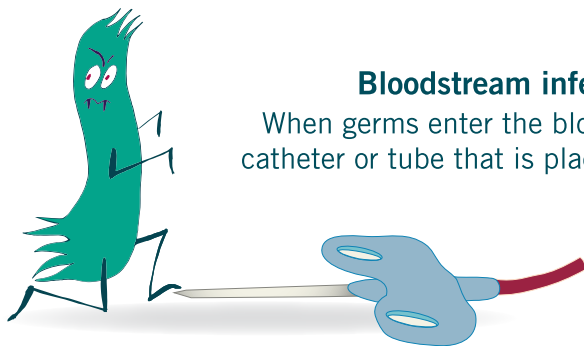
Catheter-associated urinary tract infections

When germs travel along a urinary catheter and cause an infection in your bladder or kidney.



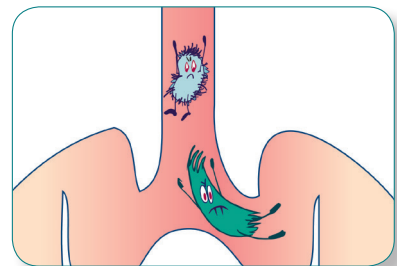
Surgical site infections

An infection that happens after surgery in the part of the body where the surgery took place.



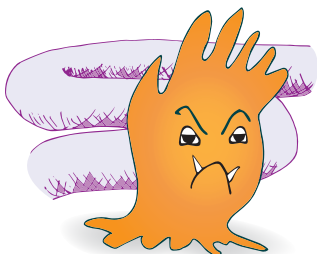
Bloodstream infections

When germs enter the blood by way of a catheter or tube that is placed in your vein.



Pneumonia

Infection of the lungs.



Gastrointestinal infections

Infections that cause inflammation in your intestinal tract and can lead to deadly diarrhea. These infections are frequently caused by the *C. difficile* germ and are often seen in patients who have taken antibiotics.

To help APIC members gear up for **International Infection Prevention Week 2014, October 19 -25**, APIC has provided these patient safety fliers to educate patients and families on their roles in infection prevention.

Infection Prevention and YOU

Visit APIC's webpage www.apic.org/InfectionPreventionAndYou to access tools and resources to get the word out to patients and healthcare workers within your healthcare organization. Here are a few simple things you can do:

1. Place this infographic poster in a patient care area.
2. "Like" the consumer-focused APIC—Infection Prevention and You Facebook page (www.facebook.com/APICInfectionPreventionandYou)
3. Include a link to the Infection Prevention and You consumer web page on your Facebook wall or Twitter post.



APIC[®]

Association for Professionals in
Infection Control and Epidemiology